

ABSOLUTE AUCTION

SATURDAY, APRIL 13, 2024 – 10:00 AM
ONLINE ITEMS BEGIN AT 10:30 AM



FARM
EQUIPMENT



DELIVERY AVAILABLE
Call Martin Trucking & Ag: 724.679.1563 for quotes.

ONSITE TERMS
Driver's license or State ID required to register for bidder number. Cash, Check, Debit Card, Visa, or Master Card accepted. 4% buyer's premium on all sales; 4% waived for cash or check when paid sale day. Information is believed to be accurate but not guaranteed. Multi Par auction process may be used.

ONLINE TERMS
Visa, MasterCard, and Wire Transfer accepted. Wire transfers required on invoices over \$3,000. 10% buyer's premium on all sales. Information is believed to be accurate but not guaranteed. Multi par auction process may be used.

AUCTION BY ORDER OF
Boak Family Farms LLC. Farm phone number 724.924.2396



RANDALL L. KIKO
AUCTIONEER/REALTOR
330.831.0174
randallkiko@kikocompany.com
#AU-005116.
Russ Kiko Assoc. #AY000170L.

TRACTORS, SKID LOADER

LIVE AUCTION WITH ONLINE BIDDING

AUCTION HIGHLIGHTS

- Planting, Tillage, Hay Equipment
- New Tires
- Skid Loader Attachments
- Tractor Weights
- Support Equipment

Preview: Friday, April 5 & April 12, 2024, 10:00 AM-4:00 PM Each Day

Pickup: Auction day until 7:00 PM. No Sunday or Monday Pickups. April 16, 17 & 18, 10:00 AM-4:00 PM Each Day. After April 18 by appointment only. All must be removed by April 30, 2024.



214 BOAK RD.,
NEW CASTLE, PA 16101

Information is believed to be accurate but not guaranteed.
KIKO Auctioneers

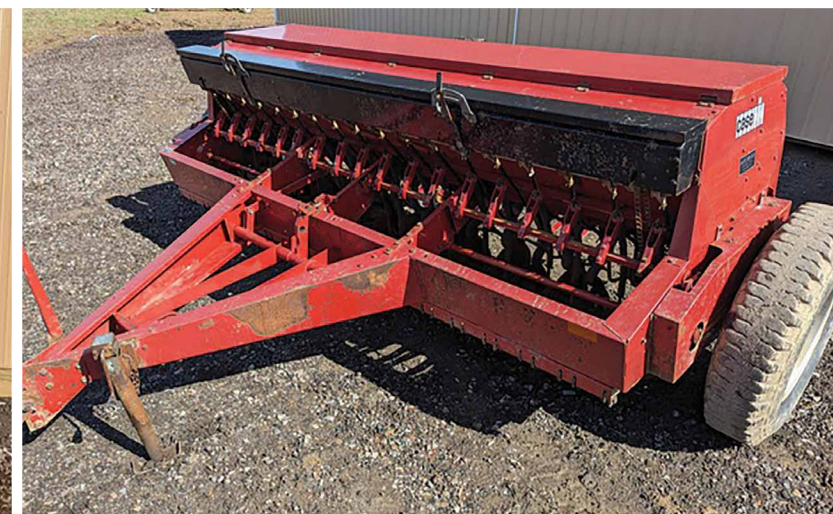


www.kikoauctions.com | 800.533.5456



Scan for auction details, including directions.

Absolute Auction.
All sells to the highest bidders on location.



WATCH WWW.KIKOAUCTIONS.COM FOR FULL AND UPDATED LISTING. THIS IS NOT A CONSIGNMENT AUCTION. ALL ITEMS FROM BOAK FAMILY FARMS LLC. CURRENT INVENTORY COMING FROM FARMER TRADE-INS AND BUYOUTS. COME PREPARED TO BUY.

TRACTORS

International 806 diesel, wide front, 3 pt, 2 remotes, exc. 18.4x34 tires; 1966 John Deere 2510 gas, wide front, exc. 15.5x38 tires, 3 pt., 1 remote (nice); 1968 Oliver 1650 gas, rare utility (swept back) front axle, 16.9x34 tires, 3 pt, 1 remote (nice); Ford 4000 gas, wide front, front weights, 3 pt (all original paint); Massy Ferguson 235 diesel, wide front, 3 pt, 1 remote, 12.4x28 rear & new 6.50x16 fronts & rims; 1959 JD 730 gas w/ 3 pt, narrow front, power steering, 15.5x38 tires, 1 remote; 1951 JD AR standard wide front (original); 1952 Farmall Super C w/ fenders, pulley, new front tires (restored); 1955 Farmall 300 w/ fast hitch, exc. 14.9x38 tires w/ wheel weights; 1962 IH 240 gas w/ all hydraulic loader & fast hitch; Minneapolis-Moline G450 tractor diesel, pwr steering, 3 pt, 1 remote, 4,677 hours, Jetstar Fenders; Ferguson 30 gas with 3 pt., new radiator

COMBINE & HEADS

JD 6620 diesel hydro, 4,700 hrs.; JD 643 corn head; JD 216 flex head

TRACTOR WEIGHTS & PARTS

(12) IH 100 lb. suitcase weights; (14) JD 100 lb. suitcase weights; new IH front weight bracket; (6) MF suitcase weights; set of Ford rear weights; JD 4020 style starter brackets; many JD & IH rear

wheel weights; pairs of new JD & IH flat-top fenders; 18.4X38 & 18.4X34 T-rail duals; 18.4x38 9-bolt duals; set of IH 9-bolt dual hubs 3-1/4"; set of JD 10-bolt dual hubs 4"; new JD 4020 style & IH style top links

SKID STEER/CONSTRUCTION/NEW ATTACHMENTS

Bobcat 542b skid steer, gas, universal quick attach; Ditch Witch RT16 walk-behind trencher; new 60", 66", 72", 78" & 84" material buckets; 74" & 84" rock buckets; 75" hyd brush grapple; 48" 4000 lb pallet forks; 48" hydraulic adjust pallet forks; double bale spear; HD tree/post puller; post-hole digger with 12" & 18" augers; mortar mixer; receiver hitches; make-up plates; used 48" manure bucket

TILLAGE & PLANTING

Nice Kewanee 1010 18' hyd flat-fold disc; White 256 19' wing disc; Unverferth 17' hyd fold rolling basket; JD 620 13' transport disc with new 20" notched front blades; IH 370 11' transport disc w/ new front blades; Kewanee 10' transport disc; Kewanee 14' transport cultmulcher; IH 6000 10-shank disc chisel; Case/Landoll 9-shank disc chisel soil saver; IH 55 13-shank pull-type chisel plow; IH 720 5x16 toggle trip plow; White 508 4X auto reset plow; JD 7000 6x30 planter w/ dry fertilizer; JD 7000 4x30 planter w/ dry fertilizer; IH 56 2x planter; JD 290 2X planter; JD 8' drag disc; Brillion 5-shank 3 pt chisel plow; Brillion 10' pull cultipacker; Ford 3X 3 pt plow; Case IH 5100 18x7 grain drill w/ grass seeder; IH 5100 21x7 grain drill w/ dbl. disc, press wheels & grass seeder; several rear-mount harrows for discs or soil savers; 14 ft. rear-mount rolling basket; assorted used disc blades

PLANTER PARTS

(16) JD single-disc fertilizer openers off late model JD planter; 6-row fert cross fill auger; JD 7000 & 7200 row units; (2) JD dry fertilizer boxes; (12) JD no-till openers; assorted JD single-disc fert openers; (6) Kinze dbl disc openers; (12) cast-iron closing wheels; (24) depth wheels; lot of pneumatic down pressure air bags & brackets; many JD seed boxes; corn & bean meters; several lots of new no-till coulter blades; plus other parts, see photos; (4) IH Cyclo planter drums

QUALITY HAY EQUIPMENT

Clean New Holland 570 square baler w/ belt thrower, hyd tension; Vermeer rebel 5400 4x5 round baler w/ gathering wheels; new/unused Rhino 8-wheel hyd fold V rake; like-new Sitrex RT5200h 4 basket hyd fold tedder; NH 477 haybine w/ good rolls, new tires & sickle; NH 256 dolly wheel rake; NH 258 hitch rake w/ new teeth; nice NH 450 7 ft. 3 pt sickle bar mower; NH 404 crusher; assorted new knives for various NH haybines

MISC. EQUIPMENT & 3 PT ATTACHMENTS

New Holland 355 grinder mixer, hyd drive; New Idea 211 manure spreader; Willmar Super 500 pull-type T/A PTO drive fertilizer spreader; Hardi TR500 tandem-axle sprayer w/ 45 ft. booms – Killbros 350 gravity wagon on JD gear; EZ Flow 225 bu. gravity wagon; McCurdy 175 bu. gravity wagon; Killbros 150 bu. gravity wagon; 8-ton running gear; 12' side-mount wagon auger for seed or fertilizer; Tyler lime spreader (needs web spliced); Rhino 15' batwing (needs TLC); New Industrias America 8 ft. pull-type hyd. lift box blade; Woods model 172 pull-type 6 ft. mower; County Line 6 ft. rotary mower 3 pt.; Land Pride & Farm Star 5 ft. rotary

mowers 3 pt.; 5 ft finish mower 3 pt.; new/unused Lowery 3 pt cone spreader; 7' 3 pt blade; 3 pt post-hole digger, boom pole & bale carrier; Brillion 6 ft. 3 pt packer seeder; pull-type hyd log splitter; new/unused round bale feeder; (4) new 8 ft gates; (2) John Deere D130 lawn mowers w/ 42" cut; JD F925 front mount mower w/ 72" deck, Yanmar diesel.

NEW TIRES

Skid steer: 10x16.5 & 12x16.5; wagon: 9.5x15 & 11x15; tractor fronts: 6.00x16, 6.50x16, 7.50x16 & 10.00x16; tractor rears: 18.4x38, 15.5x38, 13.6x38, 13.6x28, 14.9x28, 11.2x28, 14.9x24 plus more; new 11x38 drop center rims, new 9x28 6 loop rims & 10x24 6 loop rims, used 16x38 9 bolt steel dual rims

NEW MOUNTED TIRES ON RIMS

(4) 10X16.5 skid steer; (4) 12x16.5 skid steer; (4) 11LX15 implement; (4) 9.5LX15 implement

SUPPORT EQUIPMENT

New tractor seats; hitch pins; top links; drawbars; jacks; ratchet straps; new 5/16 & 3/8 G70 chains and ratchet binders; chain slings; webbing slings; clevises; cultivator shovels; wagon stake pockets; hydraulic cylinders and hoses; misc. pallet racking; new 50-gallon sprayer tank; new 1.5 cubic yard self-dumping hopper; new 28x60" shop workbench; new 25' HD jumper cables; new 1/2" air impact w/ sockets; (50) new traffic cones; used traffic signal; several used implement tires on rims; poly grain auger hoppers; plus much more!